



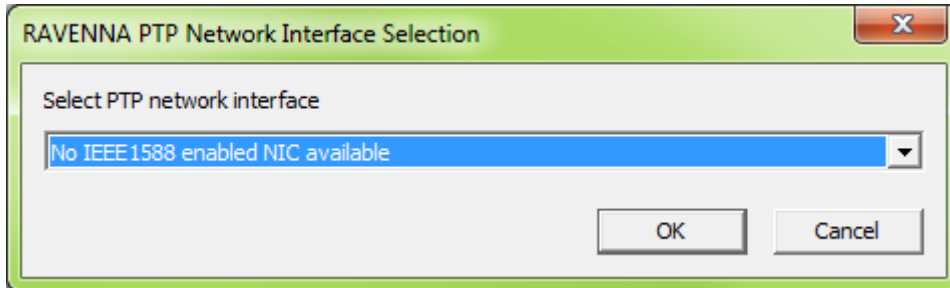
**RAVENNA Virtua Sound Card:  
Network Interface Driver Update  
after Windows 10 Update**



## 1 Problem Description

Following certain Windows 10 system updates it may be required to re-install the ALC NetworX IEEE1588-2008 network interface driver, as Windows Update routines may have reset the network interface driver setting to the original Intel driver.

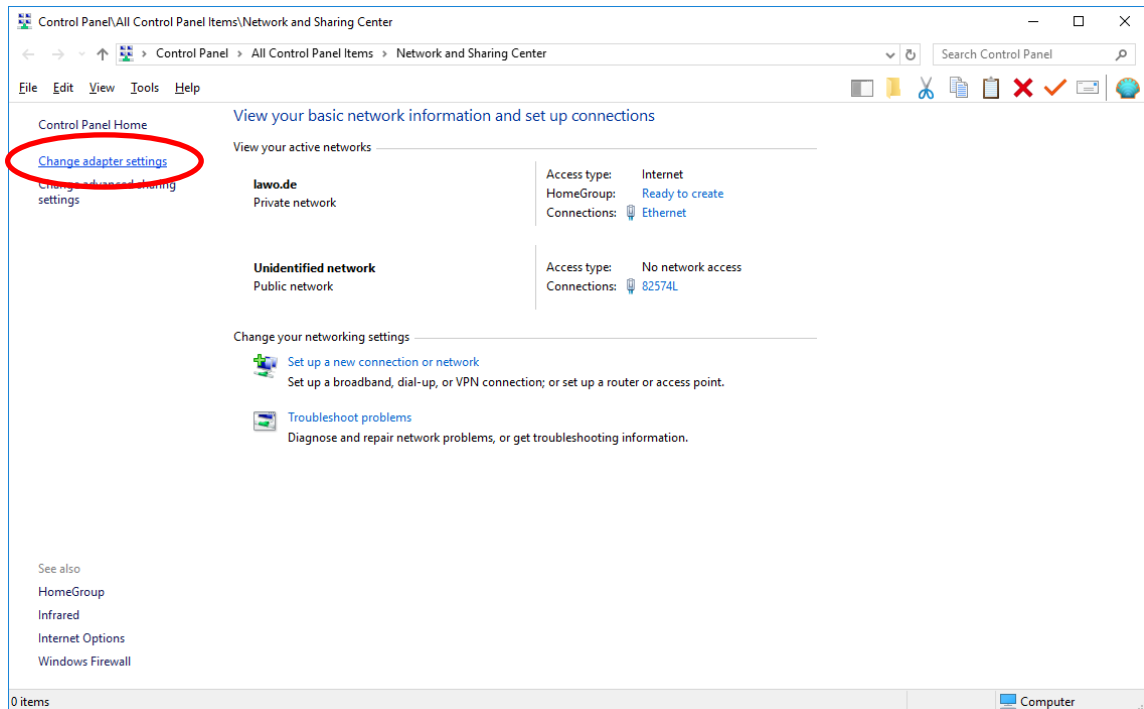
A clear indicator for this requirement is the PTP icon in the task bar staying grey, with no PTP interface being selected in the RAVENNA PTP network interface selection box (right-click on PTP icon in task bar):



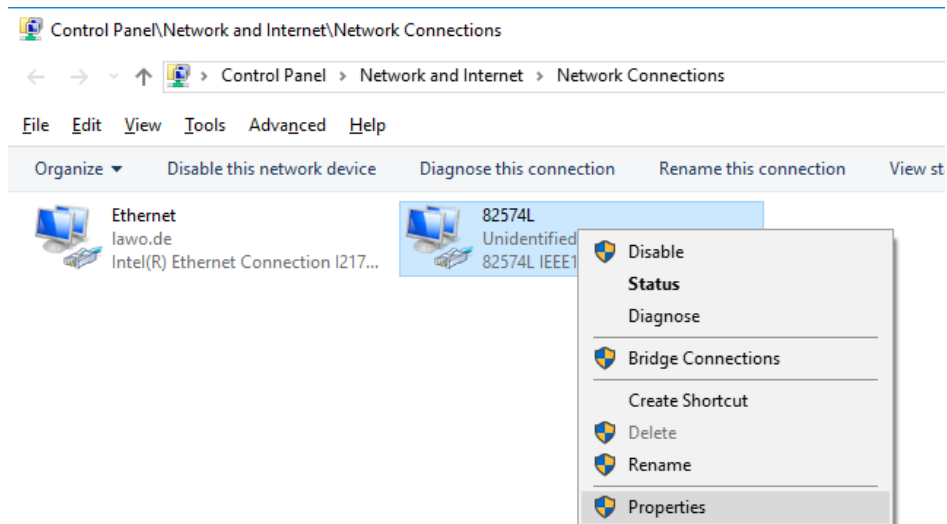
## 2 Re-installing the RAVENNA IEEE1588-2008 network interface driver

These steps assume that the RAVENNA Virtual Sound Card had been successfully installed and was running before. You may either simply re-install the RVSC or follow these steps (which usually are quicker and do not require the installer to be executed again):

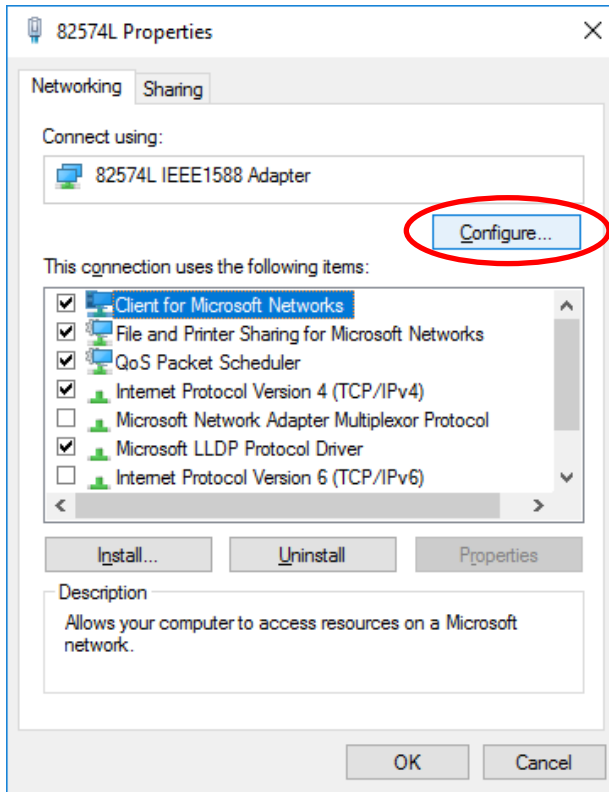
1. Open the Network and Sharing Center and select “Change adapter settings”



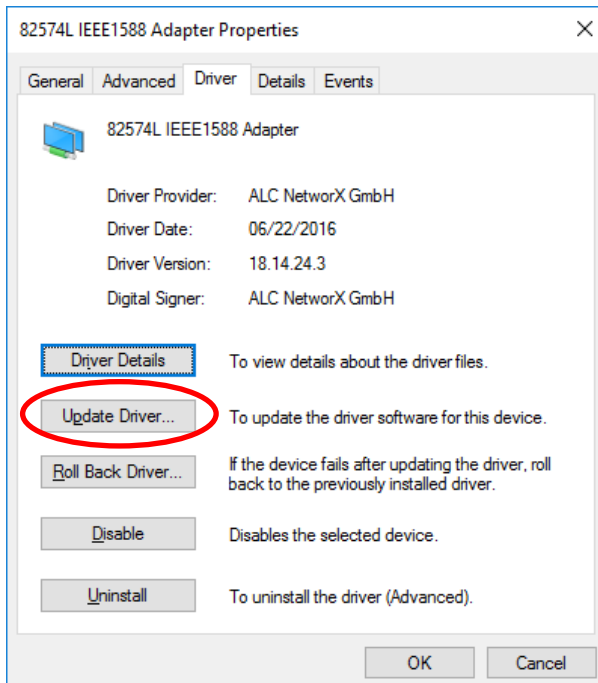
2. Select the correct network interface and choose “properties” from the context-sensitive menu



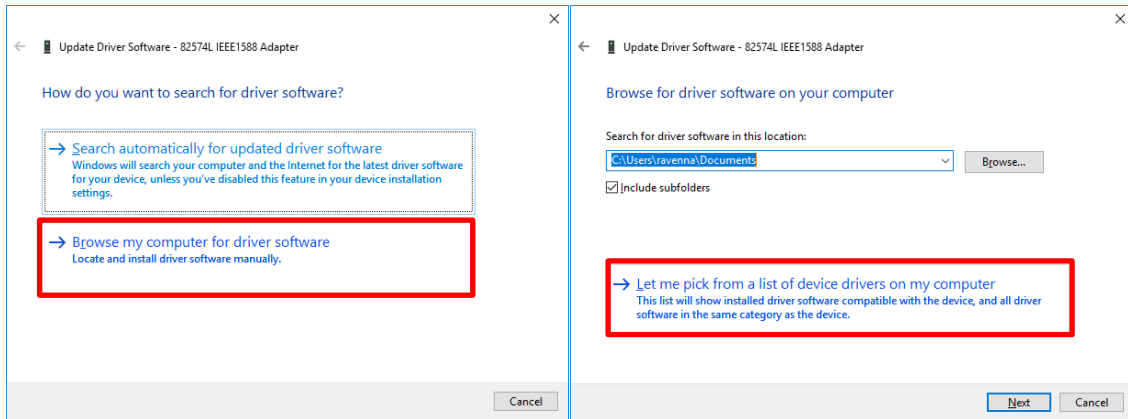
3. From the properties dialog, choose “configure”



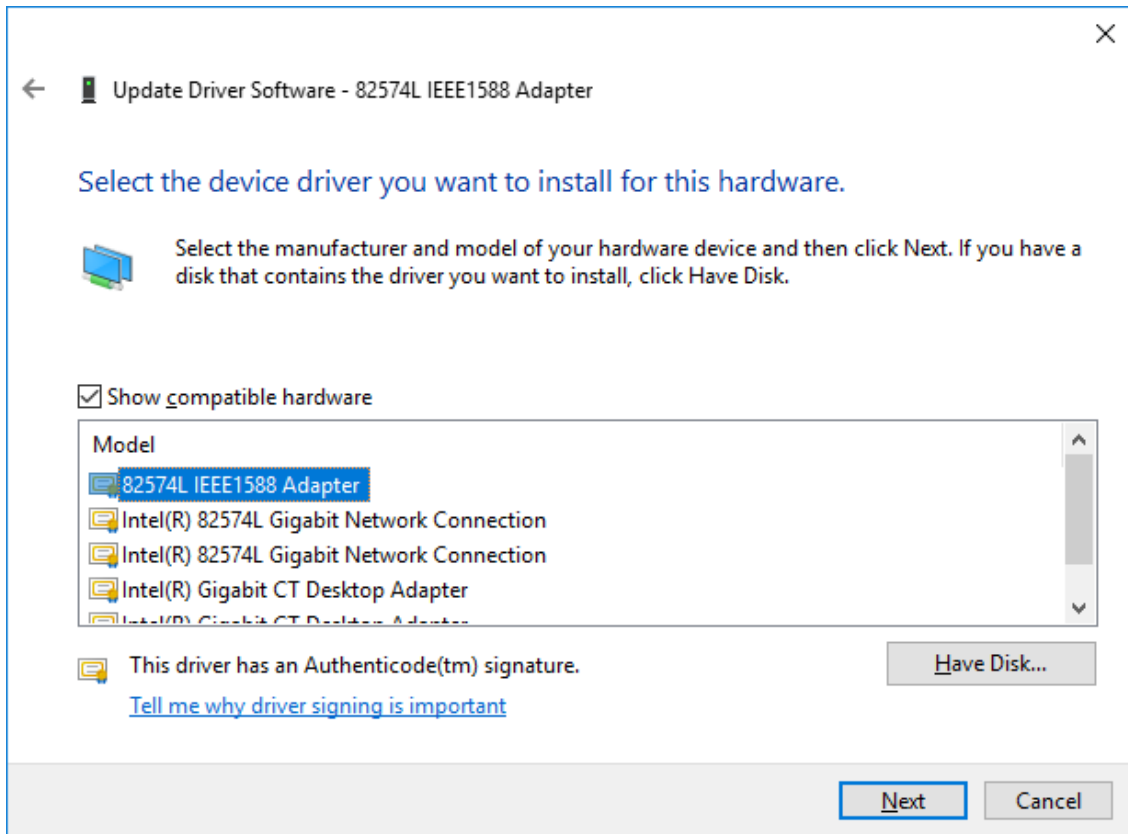
4. From the adapter properties dialog choose “update driver”



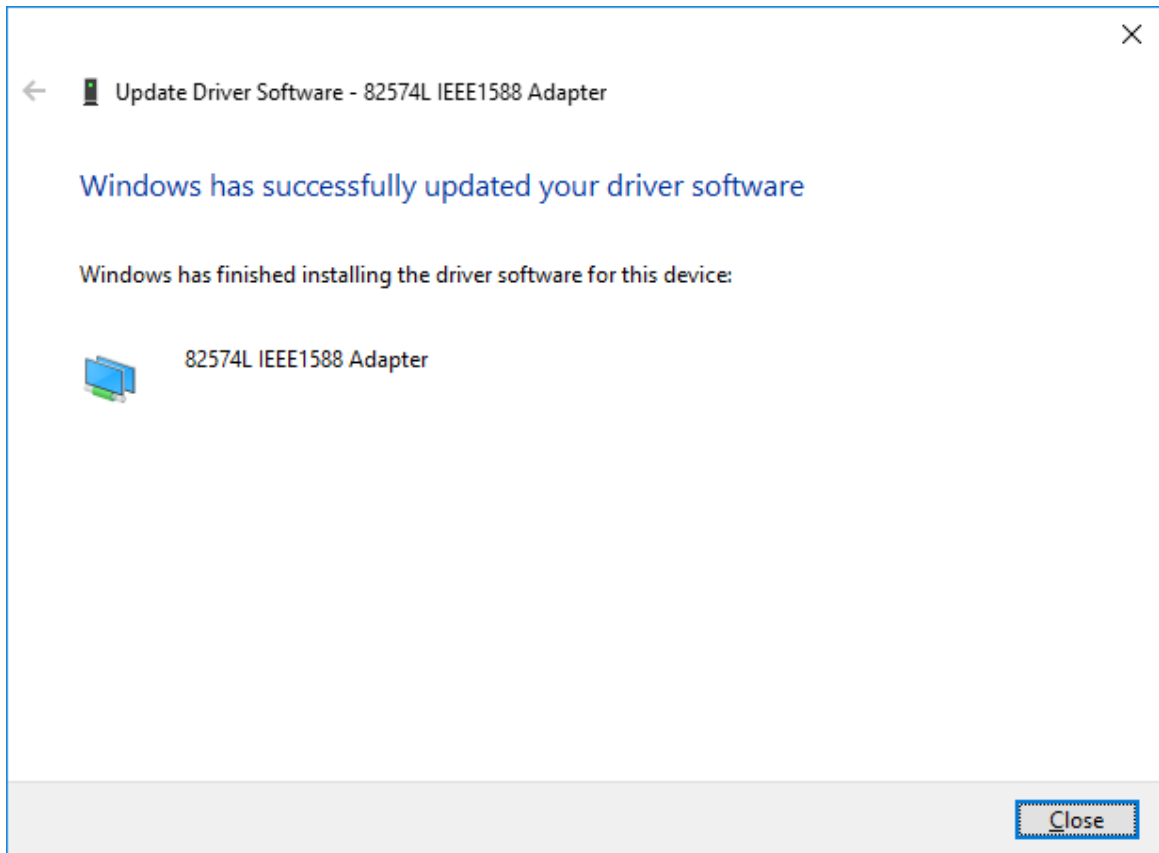
5. Select “browse my computer for driver software” and select “... pick from a list ...”



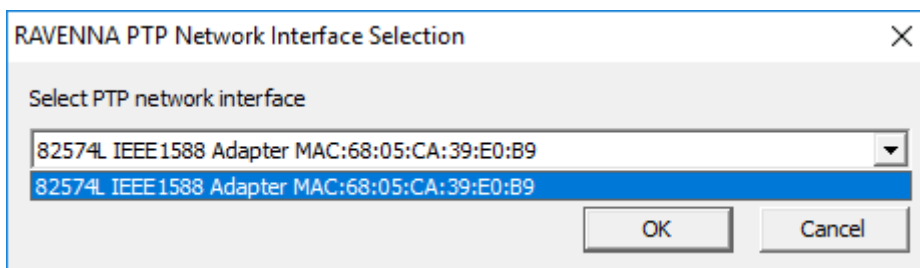
6. Select the matching IEEE1588 adapter and hit “next”



7. Windows is now re-installing the IEEE1588 driver to the selected network interface and should come up with this box:



8. Hit "close", close all other Network Adapter and Center dialogs and open PTP Interface selection from the PTP icon context menu in the tray bar; select the corresponding IEEE1588 Adapter and hit "OK".



The PTP tray icon should now turn red, indicating proper PTP service initiation. After a while, it should turn green, indication PTP sync (given, that a PTP Grandmaster is present on the network and that PTP settings are properly configured – see RVSC Installation Manual for further details).