



RAVENNA

Connect Dante Source to RAVENNA / AES67 Receiver

Introduction

Now that Audinate have released firmware to manufacturers for their Dante cards which is AES67 compatible, connecting a RAVENNA and Dante system has become not only possible but relatively straightforward.

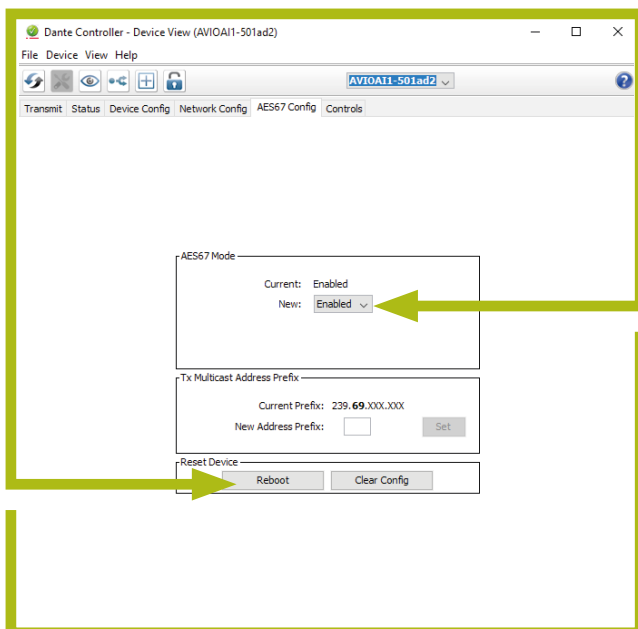
Before you start you should ensure that you have defined your IP addressing scheme (static or DHCP) and have configured and documented all your devices.

Switch Checklist

- IGMP on
- Ensure there is a single querier on the network
- Energy Efficient Ethernet off
- Jumbo Frames off

Connect Dante Source to RAVENNA / AES67 Receiver

Open Dante Controller and select the Dante device you want to send audio from.



Dante Controller

1. On a compliant device an AES67 tab will be displayed. If the current status is Disabled select **Enabled**. A message will then appear informing you that the device will need to be rebooted for this to take effect.

Once you have selected Enabled press the **Reboot** button at the bottom of this tab.

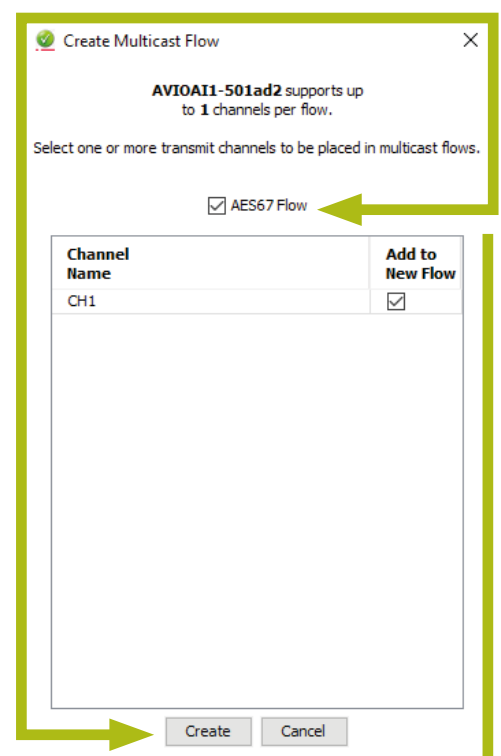
Once the device has rebooted the TX Multicast address range will be displayed. Although you can change this it is best to leave this at default at the moment.

2. You then need to create a multicast AES67 flow. Select the **transmit** tab on the device then press the create multicast button.

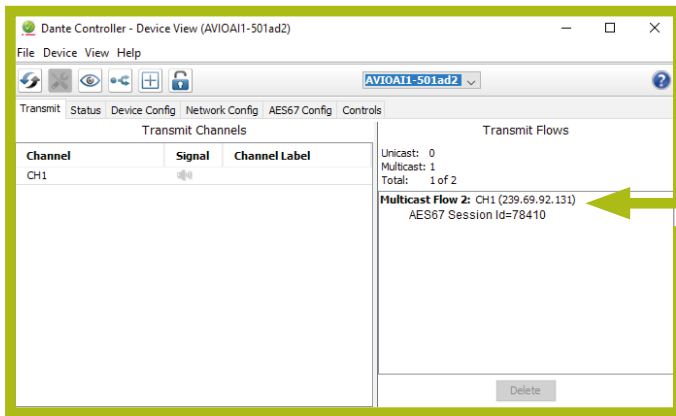
Tick the **AES67 flow** box and the channels you would like in the flow and then press **create**.



Dante Controller



Dante Controller



Dante Controller

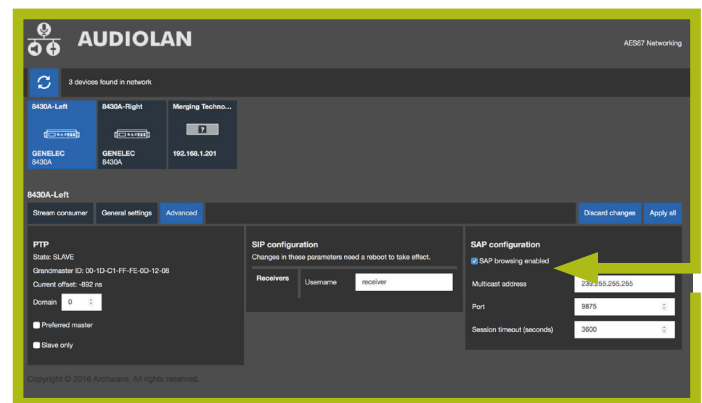
Now let's set up the receiver

Open your browser and type in the IP address of the receiving RAVENNA/AES67 device.

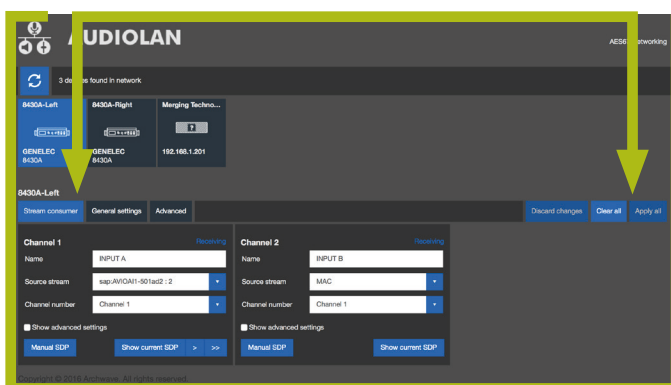
4. On the receiving device (Genelec 8430IP in this case) check if SAP browsing is possible and if so select it. If SAP browsing is not possible you will either have to enter the information manually by pressing the Manual SDP button or ensure there is a copy of RAV2SAP running on the network.

3. If this is successful details of the **flow** will be shown.

You'll know the device IP address because you defined this before this process.



Webpage of RAVENNA/AES67 receiving device



Webpage of RAVENNA/AES67 receiving device

5. Select the stream that you established earlier in the Dante Controller and select the desired channel. Then press **Apply** and start listening.